

DEVELOPMENT LEAD JOB PACK

2026





1 WELCOME

Thank you for your interest in this exciting opportunity to join the Turtle Key Arts team in the new role of Development Lead. This pack gives you all the information you need to apply, including details about the company, role, responsibilities, person specification and application process.

Turtle Key Arts was founded in 1989 to make the arts accessible to all. We are nationally recognised for producing ground-breaking participatory and performance projects that reach people who are disabled, disadvantaged, and socially excluded. We work in partnership with artists and companies across theatre, dance, circus, music and visual arts, as well as leading community engagement projects across the UK and internationally.

The Development Lead is a new post, created to strengthen and diversify our income generation at a pivotal time in our journey. We are seeking a skilled and motivated fundraiser who can help us secure the resources needed to continue delivering our ambitious, inclusive programmes, while embedding fundraising as a shared culture across our organisation and becoming a core member of the team.

We look forward to receiving your application.

Alison King CEO

Charlotte Cunningham Artistic Director



2

ABOUT US

Turtle Key Arts is an innovative and vibrant arts charity whose work has a UK and international reach.

We produce and devise original groundbreaking art to entertain and inspire.

We believe that access to the arts helps to improve quality of life by bringing people together, offering creative opportunities, social interaction, confidence and self esteem.

We produce a portfolio of performing arts companies currently including the circus companies Ockham's Razor and Sadiq Ali Company, physical theatre company Open Sky, integrated dance companies Amici Dance Theatre Company and Young Amici and new writing theatre company AIK.

We devise and manage arts participation projects, free to all participants, throughout the UK for disabled, disadvantaged and socially excluded people including autistic young people and adults and people living with Dementia, Dyslexia or HIV.

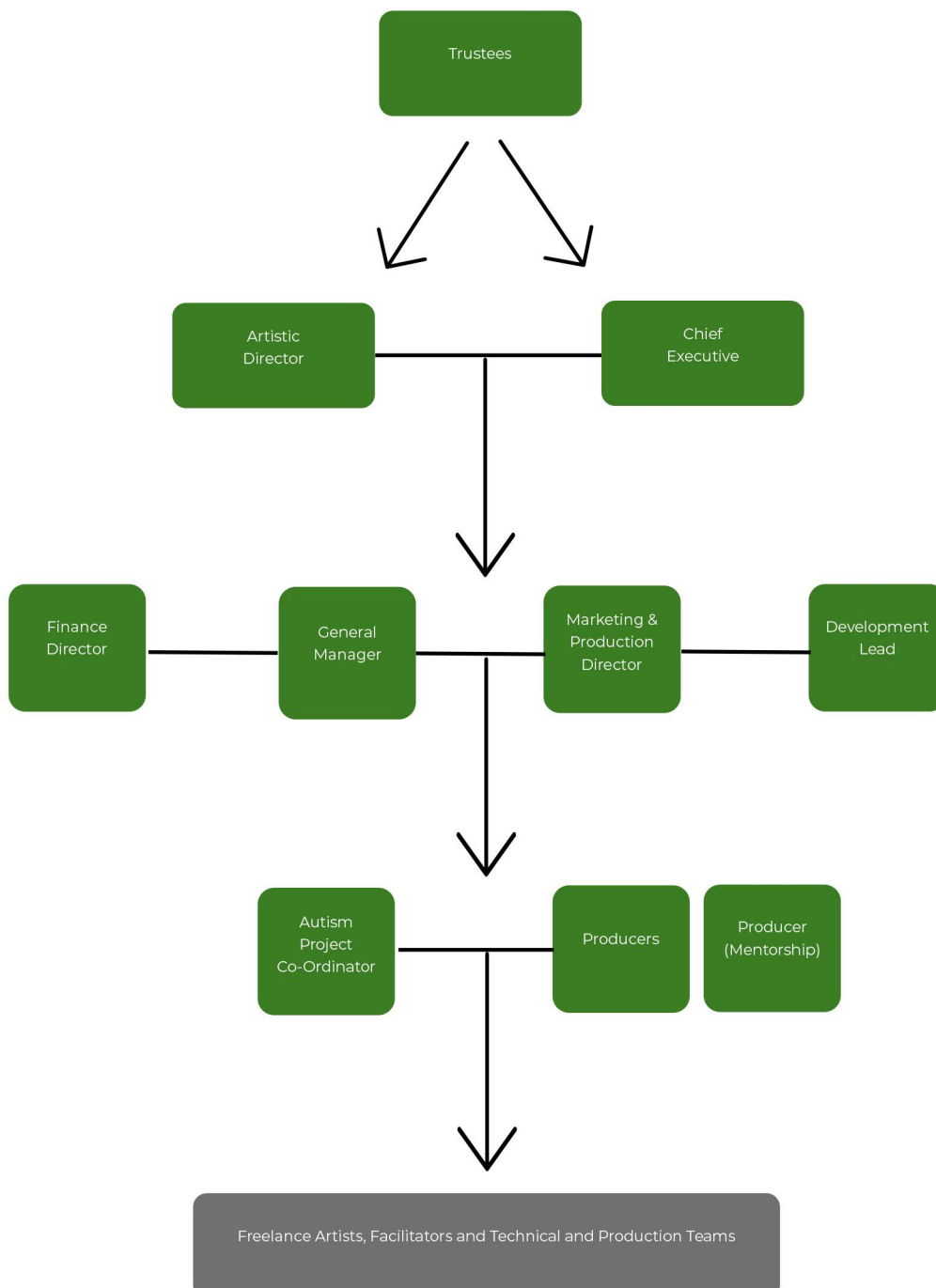
Visit turtlekeyarts.org.uk for more information

“Turtle Key Arts promote many initiatives and implement a series of measures to engage with the most vulnerable and disadvantaged parts of society.”

EVERYTHING THEATRE



3 COMPANY STRUCTURE





4

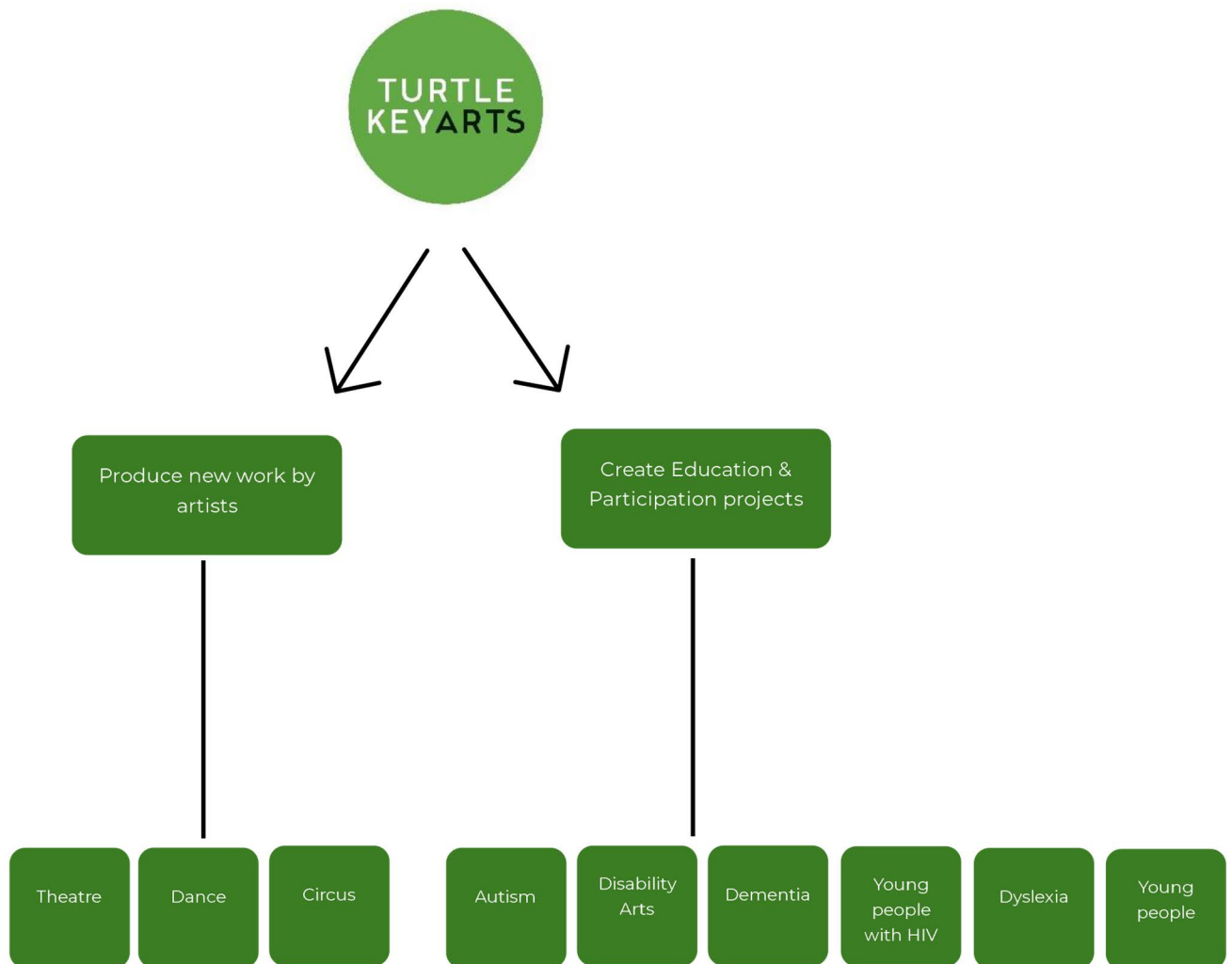
OUR WORK

We have a dual focus:

Producing new work by artists.

Creating education and participation projects with and for communities.

Our projects span theatre, dance, circus, music, spoken word, film, and cross-disciplinary art forms.



ARTISTS AND PROJECTS ARE INTER-RELATED AND EACH INFORMS THE OTHER AND OFFERS OPTIONS FOR COLLABORATION



5

JOB OVERVIEW

Position: Development Lead

Location: Turtle Key Arts Office, Lyric Hammersmith Theatre, London W6 0QL

Hours: Part-time, 3 days per week. Office hours 10am-6pm

Contract: Fixed-term, 3 years (with ambition to extend subject to funding)

Salary: £45,000 pro-rata

Start date: April 2026 (exact start date negotiable)

Holiday: Pro rata of 20 days per annum plus statutory bank holidays

Flexible working: We are open to discussing flexible working arrangements and exploring different models to suit the candidate subject to mutual agreement

“Turtle Key Arts has a long-standing reputation in its role as creative producers advancing participation in the arts by disabled, disadvantaged and socially excluded people.”

DISABILITY ARTS



6

MAIN DUTIES

The Development Lead will be responsible for leading and implementing Turtle Key Arts' fundraising strategy, working closely with the CEO, Artistic Director and Development Sub-Committee.

Key responsibilities include:

Fundraising Strategy

Deliver and refine TKA's fundraising strategy to diversify income and reduce reliance on core funders.

Identify new opportunities across trusts & foundations, corporate sponsorship, and individual giving.

Trusts & Foundations

Steward relationships with current funders and secure new multi-year grants.

Write high-quality funding applications aligned to programme priorities.

Corporate Partnerships

Implement new approaches to corporate sponsorship.

Build partnerships with businesses aligned to our mission.

Individual Giving

Develop structured donor stewardship and individual giving campaigns with trustee support

Build a culture of philanthropy across the organisation.

Public Funding

Co-manage applications to Arts Council England and other statutory funders with senior team.

Systems and Infrastructure

Enhance use of Donorfy CRM and reporting tools.

Standardise fundraising communications and impact reporting.

Culture and Advocacy

Embed fundraising confidence across staff and trustees.

Represent and advocate for Turtle Key Arts at networking and sector events.



7 PERSON SPECIFICATIONS

We are seeking an experienced fundraiser with a strong track record in the arts or charity sector, who is target driven and will thrive in a small, collaborative team.

Essential:

Proven experience of successful fundraising across trusts/foundations, public funding, individual giving and corporate sponsorship.

Excellent written communication skills with ability to craft compelling cases for support.

Strong interpersonal skills and ability to build relationships with a wide range of stakeholders.

Organised and self-motivated, with ability to manage multiple priorities.

Confidence using donor management systems (ideally Donorfy or similar CRM).

A commitment to access, inclusion, and Turtle Key Arts' mission.

Desirable:

Knowledge of participatory arts, disability arts, or socially engaged practice.

Experience supporting boards/trustees to engage in fundraising.



8 JOB BENEFITS

Lunch provided

Free tickets to Turtle Key Arts productions and its companies

Bank holidays and office closure over Christmas and New Year

Company pension scheme

Training opportunities

HOW TO APPLY

To apply, please email a CV and covering letter (max 2 pages) or up to three minutes of audio outlining how your skills and experience match the role to:
anna@turtlekeyarts.org.uk

Deadline for applications: Monday 16 February 2026 at 5pm

First round interviews (in person, Lyric Hammersmith): w/c 2 March 2026

Second round interviews (in person, Lyric Hammersmith): w/c 9 March 2026

We welcome applications and are an equal opportunities employer with an accessible workspace. If you need this information in another format, please contact Turtle Key Arts on 020 8964 5060 or [**anna@turtlekeyarts.org.uk**](mailto:anna@turtlekeyarts.org.uk)

